

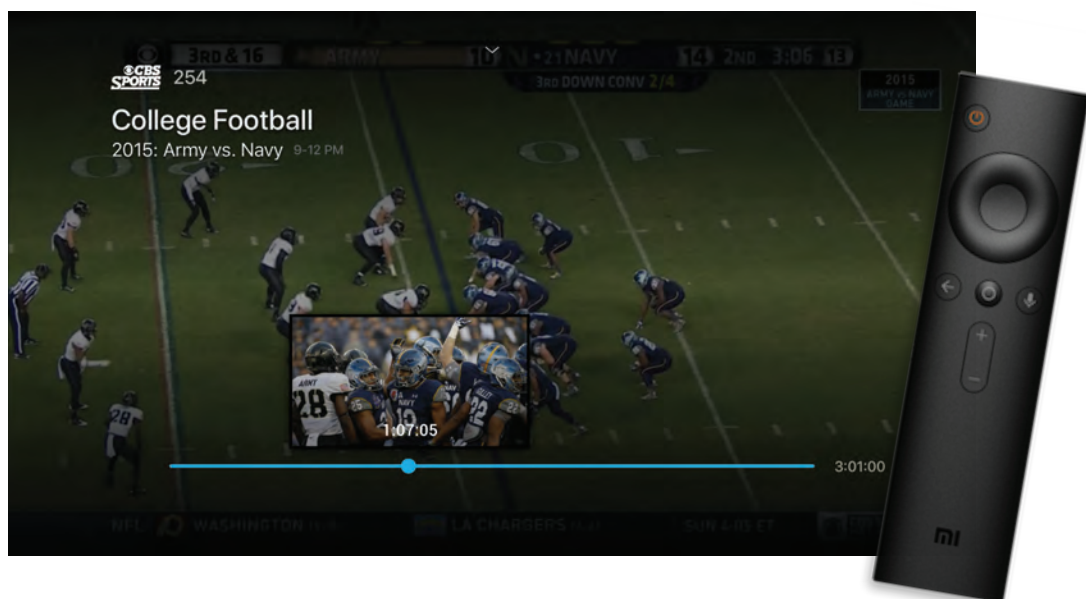


## INSTALL GUIDE - Android TV

### How to add the GlenwoodTV app from your device

1. You will need a gmail account. If you do not have one, create an account at [www.gmail.com](http://www.gmail.com).
2. If you are not currently a Glenwood customer, call Glenwood at 866-756-4746 or visit your local business office to sign up and receive your username and password.
3. Navigate to Apps.
4. Go to Get More Apps.
5. Navigate up to the search icon. Click in the box and Type "GlenwoodTV".
6. Select the GlenwoodTV app.
7. Install the app.
8. Once installed, launch the app from either your home screen or Apps.
9. Enter the username and password you were given from Glenwood.

To learn more about your Android device or setup, visit [Android.com/tv](http://Android.com/tv) or call the Glenwood Help Desk at 866-756-4746.



866 • 756 • 4746  
[gtmc.net/GTV](http://gtmc.net/GTV)